

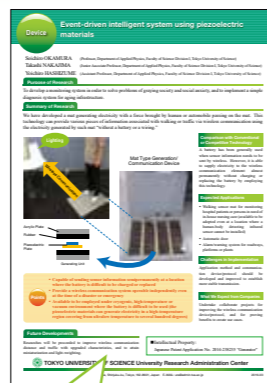
Provision of Information



University Research Administration Center

URL http://www.tus.ac.jp/en/labo/research_university.html

Here we provide an introduction of the University Research Administration Center as well as event information, press releases and other information.



Research Catalogue

URL <http://www.tus.ac.jp/ura/publications/index03.html>

Tokyo University of Science has summarized its main research projects into a "Research catalogue" and have published it on its website.

Research Catalogue Example
The catalogue is organized in a single-page with descriptions consisting of a summary of the project, its purpose, and its future developments.

Faculties and Departments

Undergraduate Schools

Faculty of Science Division I

- Mathematics
- Physics
- Chemistry
- Applied Mathematics
- Applied Physics
- Applied Chemistry

Faculty of Engineering

- Architecture
- Industrial Chemistry
- Electrical Engineering
- Information and Computer Technology
- Mechanical Engineering

Faculty of Science and Technology

- Mathematics
- Physics
- Information Sciences
- Applied Biological Science
- Architecture
- Pure and Applied Chemistry
- Electrical Engineering
- Industrial Administration
- Mechanical Engineering
- Civil Engineering

Faculty of Industrial Science and Technology

- Applied Electronics
- Materials Science and Technology
- Biological Science and Technology

School of Management

- Management
- Business Economics

Faculty of Science Division II

- Mathematics
- Physics
- Chemistry

Faculty of Pharmaceutical Sciences

- Pharmacy
- Medicinal and Life Sciences

Graduate Schools

Graduate School of Science (Master's/Doctoral Course)

- Mathematics
- Physics
- Chemistry
- Applied Mathematics
- Applied Physics
- Mathematics and Science Education

- Industrial Chemistry
- Electrical Engineering
- Management Science
- Mechanical Engineering

Graduate School of Science and Technology (Master's/Doctoral Course)

- Mathematics
- Physics
- Information Sciences
- Applied Biological Science
- Architecture and Building Engineering
- Pure and Applied Chemistry
- Electrical Engineering
- Industrial Administration
- Mechanical Engineering

Graduate School of Industrial Science and Technology (Master's/Doctoral Course)

- Applied Electronics
- Materials Science and Technology
- Biological Science and Technology

Graduate School of Management (Master's/Doctoral Course)

- Management
- Management of Technology (Professional Degree Program)

Graduate School of Engineering (Master's/Doctoral Course)

- Architecture

Graduate School of Pharmaceutical Sciences (Doctoral Course)

- Pharmaceutical Sciences (Doctoral Course)
- Pharmacoscience (Master's/Doctoral Course)

Special Training Course

Special Training Course for Teachers

- Mathematics

- Kagurazaka Campus
- Noda Campus
- Katsushika Campus

Access

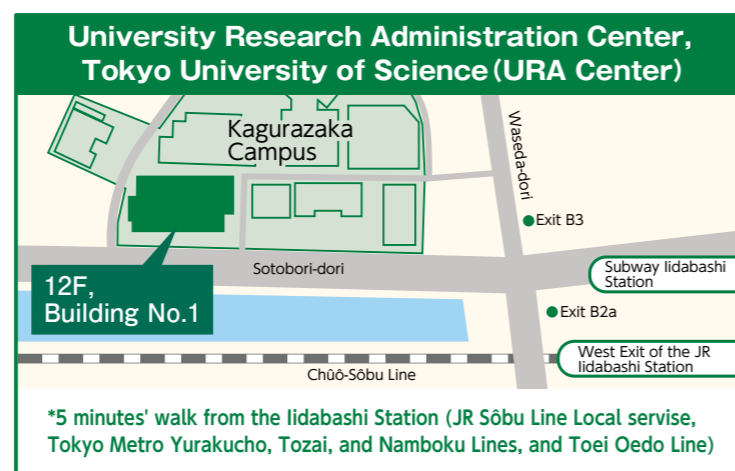
Address : 1-3 Kagurazaka, Shinjuku-ku, Tokyo 162-8601, Japan

Tel : +81-3-5228-7440 Fax : +81-3-5228-7441

E-mail : ura@admin.tus.ac.jp

Tokyo University of Science Campuses

URL : <http://www.tus.ac.jp/en/campus/>



University Research Administration Center

Tokyo University of Science University Research Administration Center

In accordance with our founding principle, “Building a better future with science”, the Tokyo University of Science (TUS) has been conducting education and research to support the scientific and technological advancement in Japan for more than 135 years. Today the Tokyo University of Science aims to be a global university with the international competitiveness, envisioning ourselves not only as TUS of Japan but also TUS of the world.

In order to bring the “unique research of TUS” up to the world-class level while valuing basic research, TUS focuses on areas with high originality and strong social needs, and drives globally acknowledged research. TUS is also building a framework for industry-university cooperation that will steadily improve the standing until TUS ranks as one of the world’s leading universities.

Based on the Mid-term Plan for Research Strategies of TUS, the University Research Administration Center, established in April 2014, is supporting research activities at TUS and at the same time driving contribution to the society through industry-university cooperation.

Staffed with highly-professional URAs*, the University Research Administration Center is composed of four divisions: Planning and Management Division, Research Strategy Formulation Division, Research & Industry-University Cooperation Supporting Division, and Regional Alliance & Commercialization Promotion Division. We are expanding our operations throughout the university as the organization in TUS Organization for Research Advancement,

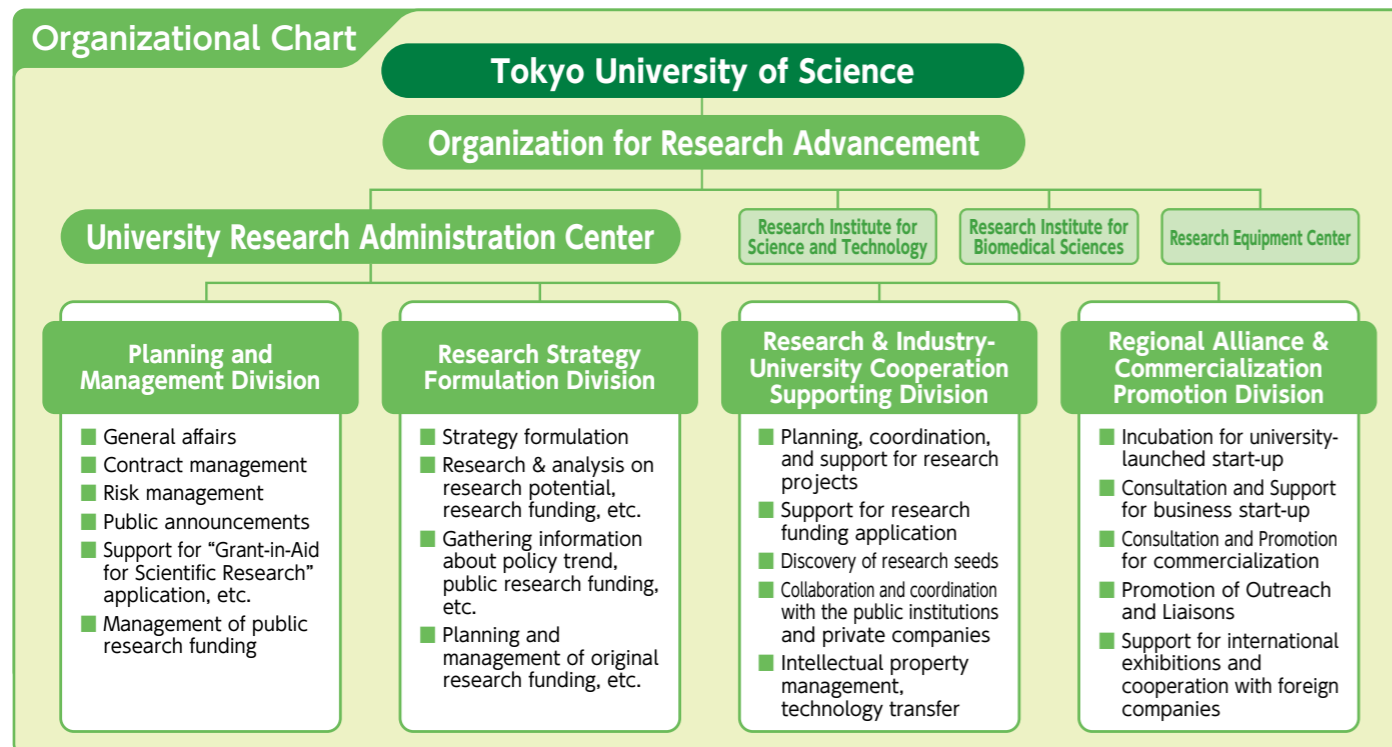
We will greatly appreciate your continued cooperation and support for our activities.

Yoshito KOGA
Director, University Research Administration Center
Tokyo University of Science



* URAs (University Research Administrators) are university personnel engaged in operations that provide fundamental impetus for the activities of researchers and that strengthen R&D management, by working together with researchers to plan and to manage research projects and promoting the utilization of research results.

~We provide support that integrates basic research, applied research projects, and returning benefits to society through industry-academia cooperation~



Industry-University Cooperation Plans

Technical Consultations

- Joint Research**
Researchers from corporations, etc., conduct research jointly with Tokyo University of Science faculty members on shared research topics. Support is also provided for collaborations with public agencies involved in joint research projects.
- Entrusted Research**
Tokyo University of Science faculty members conduct research on topics provided by corporations, etc., and report on the results of their research.
- Technical Guidance**
Technical guidance is provided by Tokyo University of Science faculty members in university laboratories. It is also possible for faculty members to provide technical guidance and consulting services directly at corporations.
- Tangible Products of Research**
We provide products obtained as a result of research (materials, samples, prototypes, models, testing equipment, etc.). We can also accept products of research conducted by external organizations.

Research Assistance

- Research Grants**
We accept donations aimed at promoting or assisting academic research.

Flow of Consultations

