



Tokyo University of Science

Organization for Innovation and
Social Collaboration



東京理科大学
TOKYO UNIVERSITY OF SCIENCE

Message



Becoming a hub of social value creation.

Makoto Yamamoto
Director, Organization for Innovation and Social Collaboration
Tokyo University of Science

Tokyo University of Science (TUS) has supported science and technology in Japan through its pursuit of education and research grounded in the university's founding spirit of "building a better future with science." And, as it approaches the 150th anniversary of its founding, TUS's vision is to raise its profile as a science university, not only in Japan but also on the world stage, by establishing itself as an internationally competitive, global university.

In this day and age, more is expected of universities than just advanced education and research; they are expected to engage in public and private sector collaboration that produces novel value for society, promotes sustainable development of society as a whole, and contributes to innovation creation.

Towards that end, the University Research Administration Center, which was created in April 2014, has been reorganized in April 2022 as the Organization for Innovation and Social Collaboration in order to expand and enhance upon its original functions and roles and create an integrated system encompassing research strategy formulation, support for innovation creation-focused research, support for entrepreneurship and community-based initiatives and management of intellectual property. All of this will facilitate the sustained pursuit of various initiatives that will improve TUS' educational and research strengths and help in addressing the challenges which face society.

As we move forward with these efforts, your increased support and assistance are sincerely appreciated.

Vision of Organization for Innovation and Social Collaboration

Promoting contributing to society and creating innovation through industry-university cooperation and social-cooperation activities



Positioning of Organization for Innovation and Social Collaboration at Tokyo University of Science



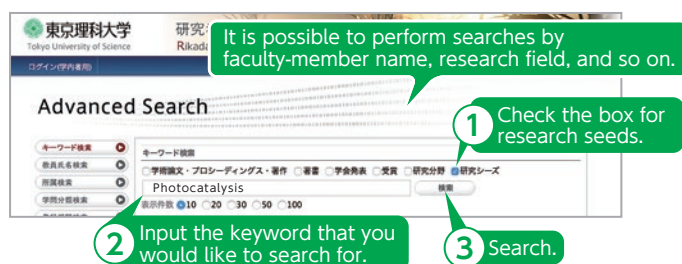
Consultation regarding industry-university cooperation

● Research information of TUS

The researcher information and research activities of TUS can be viewed on RIDAI or Pure.

Rikadai Integrated Database of Academic Information (RIDAI)

The research seeds of the Tokyo University of Science are disclosed to the public on the internet.



Researcher profiling tool (Pure)



Flow of consultation

STEP 1



Consulting contact desk of Organization for Innovation and Social Collaboration

Upon being consulted regarding issues, the contact desk of the Organization for Innovation and Social Collaboration will search for optimal researchers for solving such issues. Please contact the desk via "inquiries" on the Organization for Innovation and Social Collaboration website.

STEP 2



Discussing content of contract once researchers have been decided

Once the researchers have been decided, a URA (University Research Administrator) of TUS will serve as a coordinator between the researchers and the contact person of your company or organization, and discussions on the content of your contract will be held. It is possible to conclude a non-disclosure agreement prior to holding discussions on the content of your contract, so please consult us about this if necessary.

STEP 3



Concluding contract

After discussions have been held by both your company or organization and TUS and the content of your contract has been determined, the contract will be concluded. As for the time period, in principle, research contracts are concluded as annual contracts. When the contract is being concluded, discussions regarding confidentiality and intellectual property are held as necessary.

*A contract template of TUS can be viewed on the TUS website.

STEP 4



Starting of research following payment of research funds

TUS will send an invoice to your company or organization, and this should be paid by bank transfer. After the research funds have been paid, TUS will start the research.

Contact
point
for inquiries



Tokyo University of Science Organization for Innovation and Social Collaboration
1-3 Kagurazaka, Shinjuku-ku, Tokyo 162-8601, Japan
TEL : +81(0)3-5228-7440 FAX : +81(0)3-5228-7442 e-mail : ura@admin.tus.ac.jp



Initiatives regarding industry-university cooperation

We are carrying out various initiatives as industry-university cooperation activities in order to broadly contribute to society.

Research cooperation

■ If you would like to consult TUS regarding technologies

Technical guidance

Faculty members of TUS provide technical guidance. We can also directly visit your company or organization to engage in consultations and consulting.

■ If you would like to request TUS to perform research

Entrusted research

Faculty members of TUS engage in research upon being entrusted with research issues from your company or organization. When the research has been completed, the results are reported.

■ If you would like to jointly perform research with TUS

Joint research

Faculty members of TUS and researchers of your company or organization jointly engage in research regarding shared research issues by assigning roles, for example.

■ If you would like to engage in research and education together with TUS

Social-cooperation courses

While joint research is being carried out, courses featuring the name of your company or organization are run, and thus the functions of both the joint research and the sponsored courses can be utilized.

Provision of research results

■ If you would like to utilize research results of TUS

Technology transfer

Research materials and samples, such as materials, patents, software, and applications, owned by TUS can be utilized based on MTAs, licenses, and so on.

*MTAs = contracts that determine how tangible research materials can be used when they have been provided or received

Encouragement of research and education

■ If you would like to encourage research

Research grants

We accept donations that are aimed at promoting and subsidizing education or academic research.

■ If you would like to encourage education

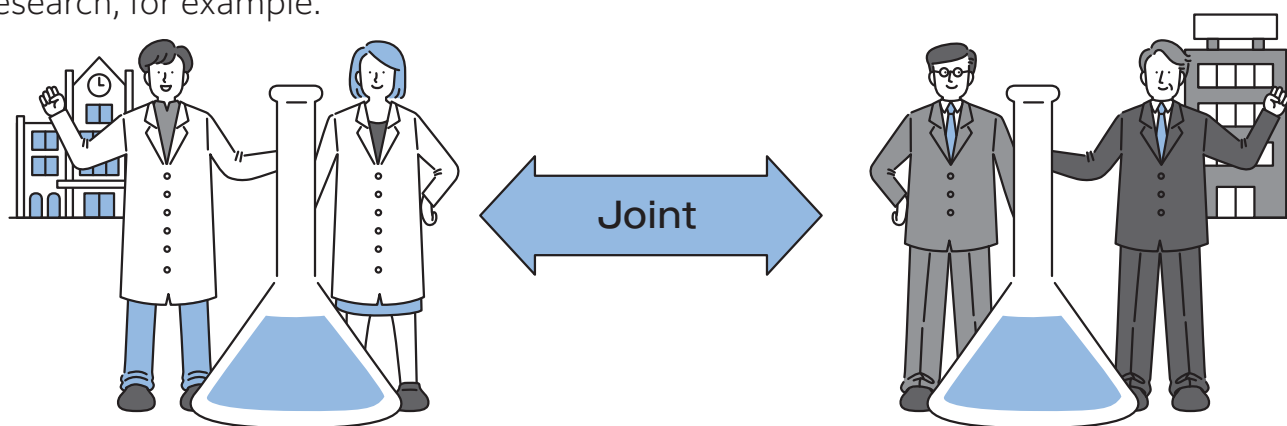
Sponsored courses and sponsored research divisions

Based on donations from your company or organization, we establish new courses and research divisions. It is possible for the names of courses to feature the name of your company or organization.

Joint research

Faculty members of TUS and researchers of your company or organization jointly engage in research regarding shared research issues.

We provide support for joint applications for public research funds related to the joint research, for example.



Flow of joint research

STEP 1



Discussions on contract content

Discussions are held on the content of the contract regarding the joint research. In the case of holding discussions that will involve the disclosure of confidential information, a non-disclosure agreement is concluded.

*A contract template of TUS can be viewed on the TUS website.

*Starting from FY2021, at TUS, faculty-member research participation expenses (the personnel costs of the faculty members who are participating in research) are recorded as research expenses. Please consult us regarding the recording of faculty-member research participation expenses during the contract negotiations.

STEP 2



Payment of research funds following contract conclusion

Once the contract content has been determined, a contract will be concluded. TUS will send an invoice to your company or organization. Please pay the research funds by bank transfer.

STEP 3

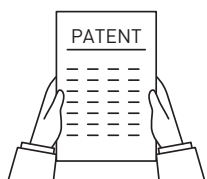


Start of joint research

Research will be started after the research funds have been paid.

*It is possible to use research equipment, etc. of the university.

STEP 4



After completion of research

In regard to the research results obtained from the joint research, we will provide support in accordance with the objectives including actions such as jointly applying for patents or applying for public research funds.

Contact
point
for inquiries



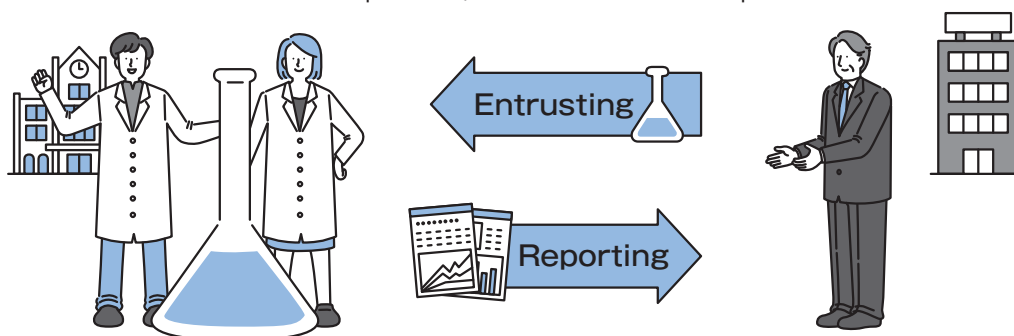
Tokyo University of Science Organization for Innovation and Social Collaboration
1-3 Kagurazaka, Shinjuku-ku, Tokyo 162-8601, Japan
TEL : +81(0)3-5228-7440 FAX : +81(0)3-5228-7442 e-mail : ura@admin.tus.ac.jp



Entrusted research

We accept the entrustment of research issues from your company or organization, and then faculty members of TUS carry out the research.

When the research has been completed, the results are reported.



Flow of entrusted research

STEP 1



Discussions on contract content

Discussions are held on the content of the contract regarding the entrusted research. In the case of holding discussions that will involve the disclosure of confidential information, a non-disclosure agreement is concluded.

*A contract template of TUS can be viewed on the TUS website.

*Starting from FY2021, at TUS, faculty-member research participation expenses (the personnel costs of the faculty members who are participating in research) are recorded as research expenses. Please consult us regarding the recording of faculty-member research participation expenses during the contract negotiations.

STEP 2



Payment of research funds following contract conclusion

Once the contract content has been determined, the contract will be concluded. TUS will send you an invoice. Please pay the research funds by bank transfer. After the research funds have been paid, TUS will start the research.

STEP 3



After completion of research

The research results that have been obtained through the entrusted research will be reported to your company or organization, which is the entrusting party.

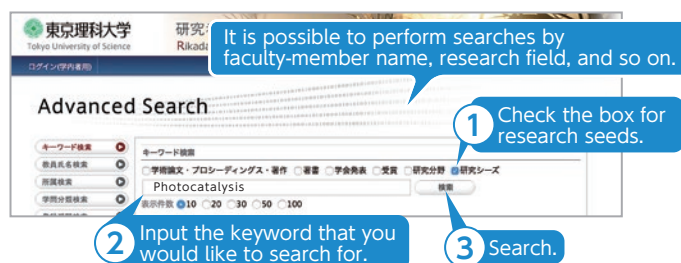
Visit here for research seeds

Tokyo University of Science website > RESEARCH > Rikadai Integrated Database of Academic Information [RIDAI] [Pure]
<https://www.tus.ac.jp/research/>



Rikadai Integrated Database of Academic Information (RIDAI)

The research seeds of the Tokyo University of Science are disclosed to the public on the internet.



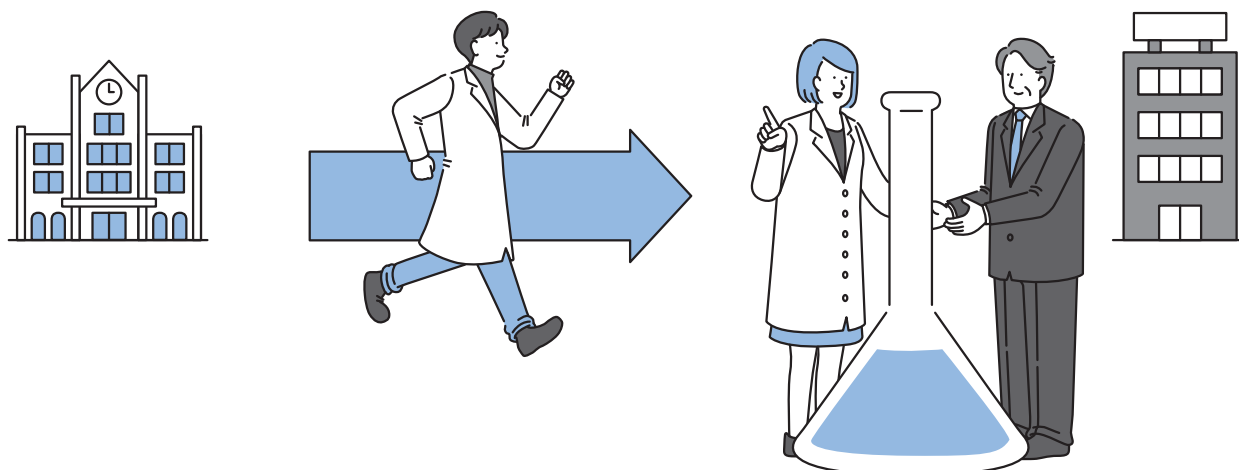
Researcher profiling tool (Pure)



Technical guidance

Researchers of TUS provide technical guidance based on their specialized knowledge, and thereby support the activities of the requester.

Small-amount, short-term services can be accommodated, and thus cases of progression from technical guidance to joint research can be anticipated.



Flow of technical guidance

STEP 1



Discussions on contract content

Discussions are held between TUS and your company or organization on the content of a contract regarding the technical guidance.

A non-disclosure agreement can also be concluded if necessary.

*A contract template of TUS can be viewed on the TUS website.

*In FY2021, TUS introduced faculty-member research participation expenses (an hourly rate). Please consult us regarding the recording of faculty-member research participation expenses during the contract negotiations.

STEP 2



Payment of research funds following contract conclusion

Once the contract content has been determined, a contract will be concluded. TUS will send an invoice to your company or organization. Please pay the research funds by bank transfer.

STEP 3



Start of technical guidance

Researchers of TUS provide technical guidance based on their specialized knowledge, and thereby support the activities of the requester.

We can also directly visit your company or organization to engage in consultations and consulting.



Technology transfer

Research results, such as materials, patents, software, and applications, of TUS faculty members can be utilized based on MTAs, licenses, and so on.

*MTAs = contracts that determine how tangible research materials can be used when they have been provided or received



If you wish to receive the research results that have been obtained, such as materials, samples, prototypes, model items, and experimental equipment, please send an e-mail inquiry to the contact desk of the Organization for Innovation and Social Collaboration.

<Contact desk of Organization for Innovation and Social Collaboration: ura@admin.tus.ac.jp>

*An MTA template of TUS can be viewed on the TUS website.

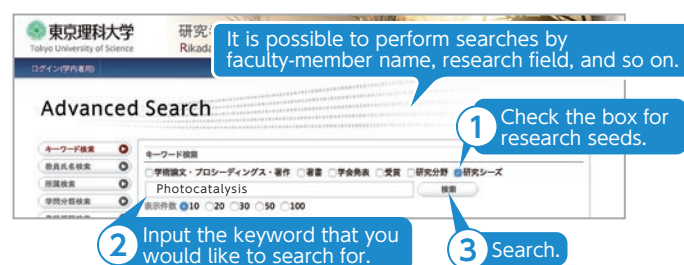
Visit here for research seeds

Tokyo University of Science website > RESEARCH > Rikadai Integrated Database of Academic Information [RIDAI] [Pure]
<https://www.tus.ac.jp/research/>



Rikadai Integrated Database of Academic Information (RIDAI)

The research seeds of the Tokyo University of Science are disclosed to the public on the internet.



Researcher profiling tool (Pure)



Sponsored courses and sponsored research divisions

Based on donations from your company or organization, we establish new courses and research divisions.

It is possible for the course names to feature the name of your company or organization.



Flow of sponsored courses and sponsored research divisions

STEP 1



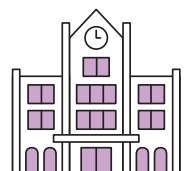
Consultation regarding sponsored courses and sponsored research divisions

The contact desk of the Organization for Innovation and Social Collaboration accepts applications for donations from your company or organization and connect you to the person in charge.

Subsequently, a contact person of TUS will hold a meeting with a contact person of your company or organization regarding matters such as the time periods of establishment and names of related courses or research divisions.

*It is possible for course names to feature the name of your company or organization. Please let us know your wishes in this regard.

STEP 2



Establishment of sponsored courses or sponsored research divisions

Based on the donations from your company or organization, new courses or research divisions will be established and run at TUS.

*Research results that have been obtained shall be attributed to TUS.

*It is possible to receive tax incentives (deductions for donations).

Contact
point
for inquiries



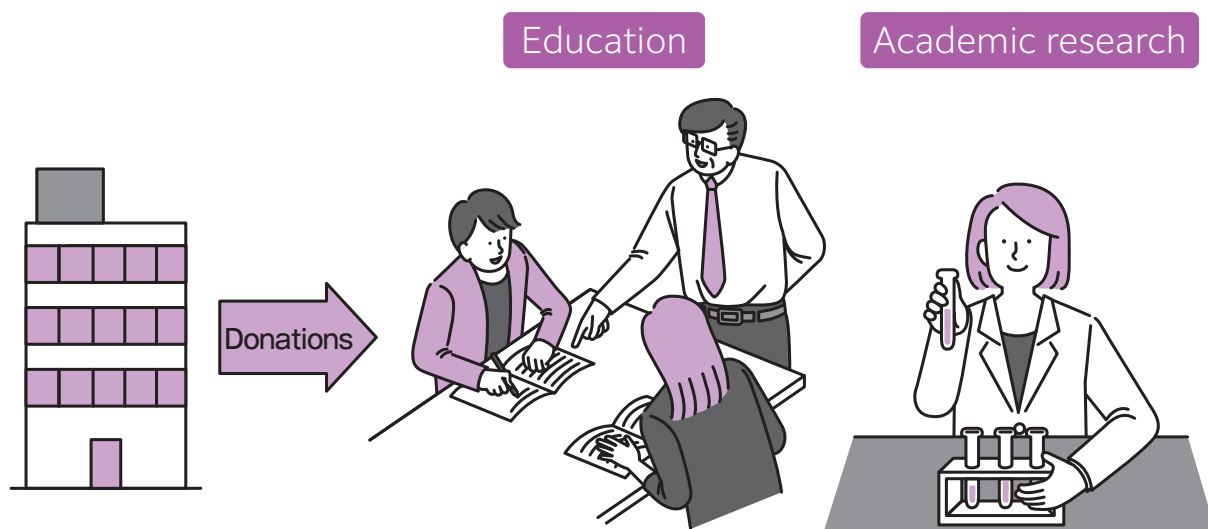
Tokyo University of Science Organization for Innovation and Social Collaboration
1-3 Kagurazaka, Shinjuku-ku, Tokyo 162-8601, Japan
TEL: +81(0)3-5228-7440 FAX: +81(0)3-5228-7442 e-mail: ura@admin.tus.ac.jp



Research grants

We accept donations that are aimed at promoting and subsidizing education or academic research.

The donations will be used for education and research, etc. at TUS, and will be returned to society through research results.



Flow of research grants

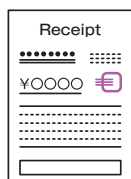
STEP 1



Consultation regarding donations

The contact desk of the Organization for Innovation and Social Collaboration connects you to the person in charge applications for donations from your company or organization.

STEP 2



Receiving of research grants

After research grants have been received from your company or organization, the Chairperson of TUS will send a donation receipt, etc. addressed to the donor.

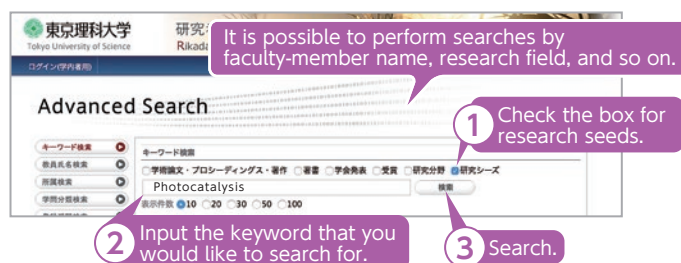
Visit here for research seeds

Tokyo University of Science website > RESEARCH > Rikadai Integrated Database of Academic Information [RIDAI] [Pure]
<https://www.tus.ac.jp/research/>



Rikadai Integrated Database of Academic Information (RIDAI)

The research seeds of the Tokyo University of Science are disclosed to the public on the internet.

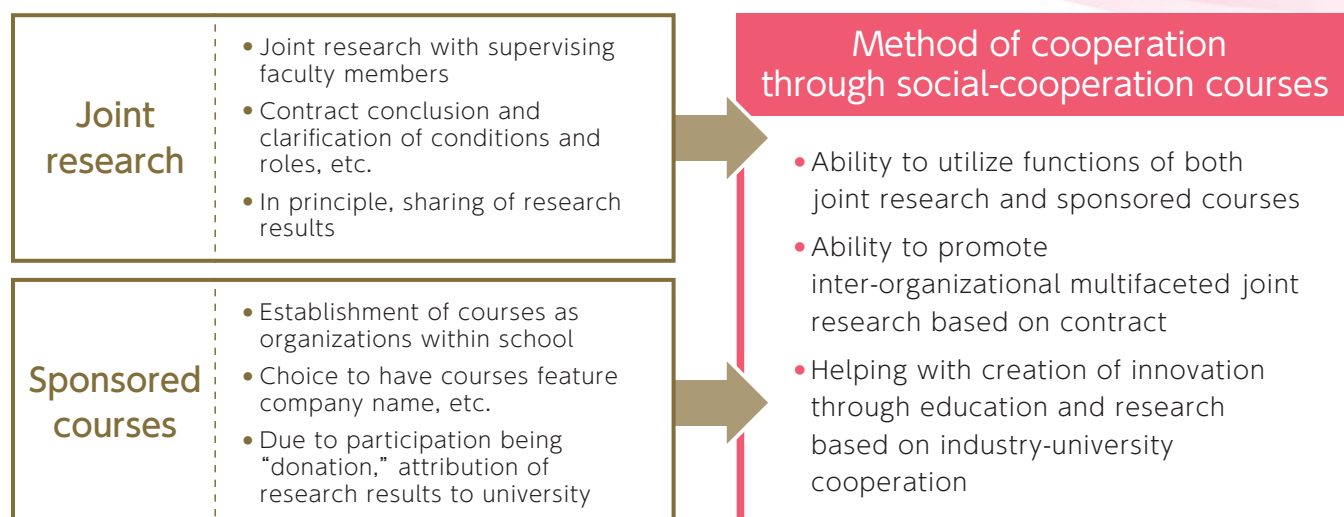


Researcher profiling tool (Pure)






Social-cooperation course system

— Organizational cooperation for further utilization of university as
“forum for research and education” —



What can be done through social-cooperation courses

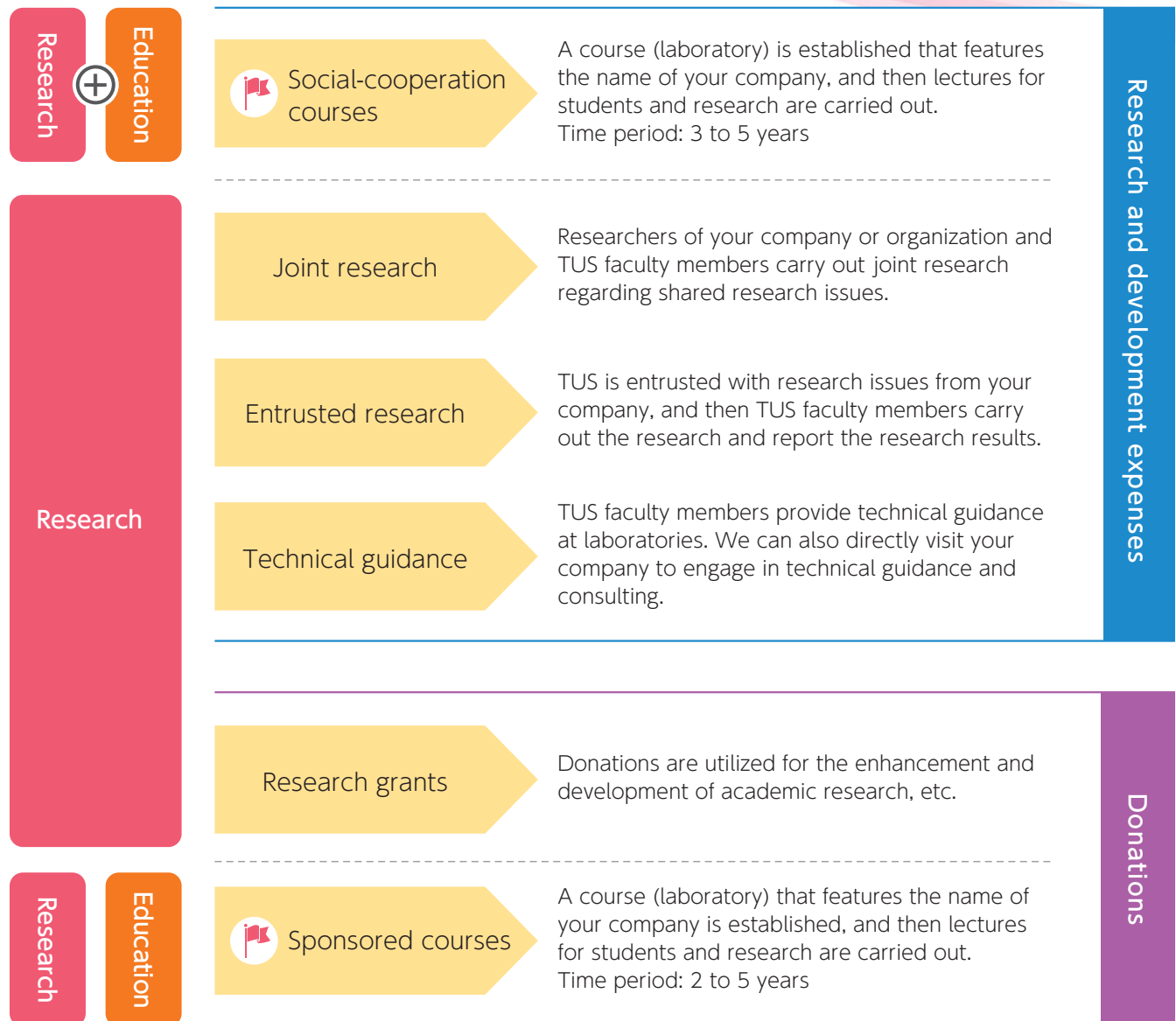
<p>Research</p> 	<ul style="list-style-type: none"> • Implementation of joint research and sharing of research results based on contact • Accepting of joint researchers from companies • Hiring of new researchers • Establishment of laboratories featuring company name, etc.
<p>Education</p> 	<ul style="list-style-type: none"> • Cultivation of human resources through student guidance at laboratories • Establishment of courses, etc. featuring company name, etc. (including granting of credit)
<p>Name</p> 	<ul style="list-style-type: none"> • Establishment of social-cooperation courses featuring company name, etc. • Establishment of courses, etc. featuring company name, etc. (including granting of credit) • Establishment of laboratories featuring company name, etc.



Method of cooperation with Tokyo University of Science



It is possible to establish courses (laboratories) that feature the name of your company.



Research and development expenses

- A contract is concluded, and the conditions and roles, etc. are clarified.
- It shall be possible to jointly examine research content.

Donations

- There is no conclusion of a contract.
- Research results (intellectual property) shall be attributed to the university.

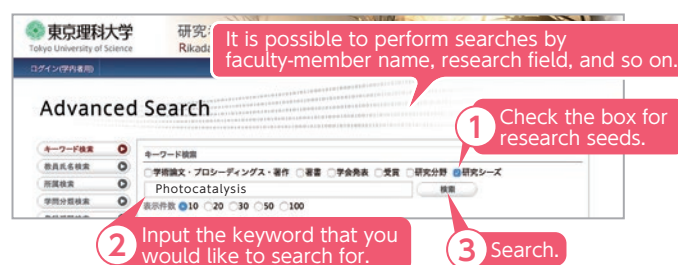
Visit here for research seeds

Tokyo University of Science website > RESEARCH > Rikadai Integrated Database of Academic Information [RIDAI] [Pure]
<https://www.tus.ac.jp/research/>



Rikadai Integrated Database of Academic Information (RIDAI)

The research seeds of the Tokyo University of Science are disclosed to the public on the internet.



Researcher profiling tool (Pure)



Frequently-asked questions

Q1

We have an issue that we would like to solve, yet do not know which researchers and research fields would be suitable for achieving this. Is it possible to have the consultation desk of the Organization for Innovation and Social Collaboration look into this matter for us?

A Yes, it is possible. In the form for “inquiries” on the Organization for Innovation and Social Collaboration website, please provide the required information and contact us. We will look for optimal researchers based on the information that you have provided.
Organization for Innovation and Social Collaboration
URL: <https://www.tus.ac.jp/ura/>

Q2

About how much are the expenses for each of the services?

A **Technical guidance:** There is no upper limit or lower limit regarding the expenses. After holding consultations with faculty members and URAs, a suitable monetary amount will be set, based on the content of the technologies that will be disclosed to your company or organization, and the costs required for the technical guidance.

Entrusted research: This can be carried out starting at 500,000 yen (including tax). After holding consultations with faculty members and URAs, a suitable monetary amount will be set, taking into consideration the research content and the level of contribution of the faculty members.

Joint research: There is no upper limit or lower limit regarding the expenses. After holding consultations with faculty members and URAs, a suitable monetary amount will be set, taking into consideration the research content and the level of contribution of the faculty members.

*At the Tokyo University of Science (TUS), we have introduced faculty-member research participation expenses (an hourly-rate method). An explanation on the recording of faculty-member research participation expenses is given during the contract negotiations.

Q3

In the case that there are devices, equipment, and so on that TUS has purchased with the research expenses that we have paid, to which party do they belong?

A If there are devices, equipment, and so on that TUS has purchased with research expenses that have been paid, they belong to TUS. Incidentally, it is possible for your company or organization to loan devices and equipment to us for use in joint research or entrusted research, and then for us to return these after the research has been completed.

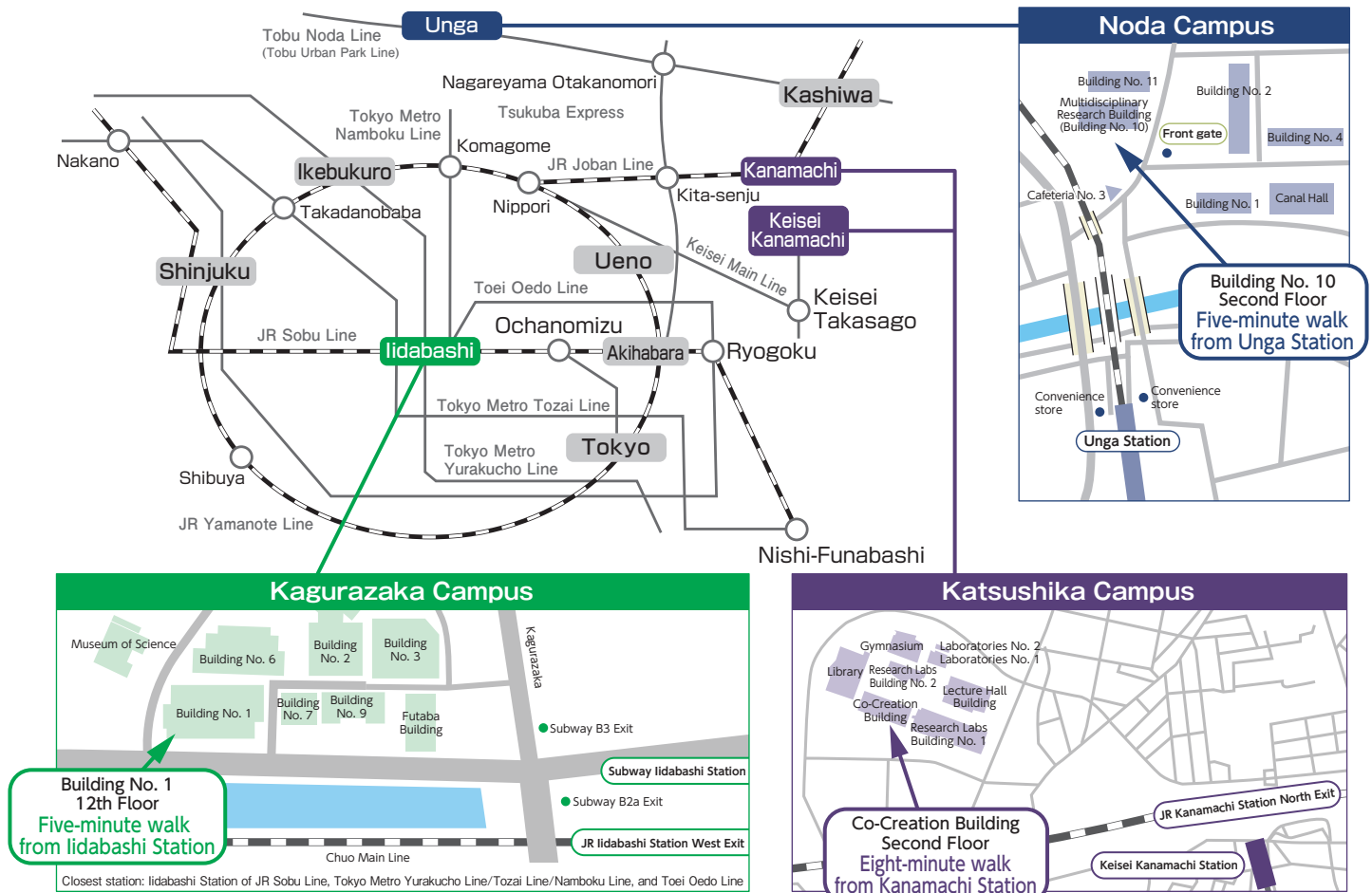
Q4

How do you handle inventions that have been created through the joint research and entrusted research?

A In principle, the rights related to inventions that have been created by faculty members, etc. of TUS are attributed to TUS. In regard to rights based on a joint invention by your company or organization and faculty members, etc. of TUS, an appropriate agreement will be reached with your company or organization during contract conclusion, taking into consideration factors such as levels of contribution and the mission of the university.



Access



Consultation desk regarding industry-university cooperation

Contact
information

1-3 Kagurazaka, Shinjuku-ku, Tokyo 162-8601, Japan

Tel.: +81(0)3-5228-7440 Fax: +81(0)3-5228-7442 E-mail: ura@admin.tus.ac.jp

